



Ceiling Automatic Door

It is available to make wide use of low door.



Single-Sliding Door

WS-T200(S)

Double-Sliding Door

WS-T400(D)

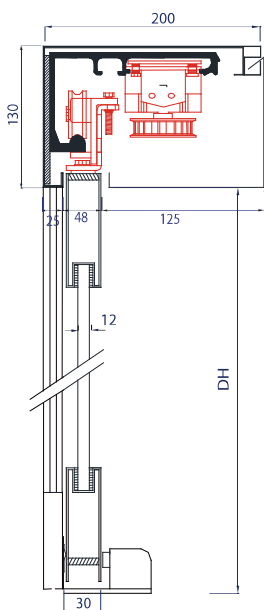
It is available to make better use of place by lower frame by 115mm, when it is hard to install because of low door.

Specification

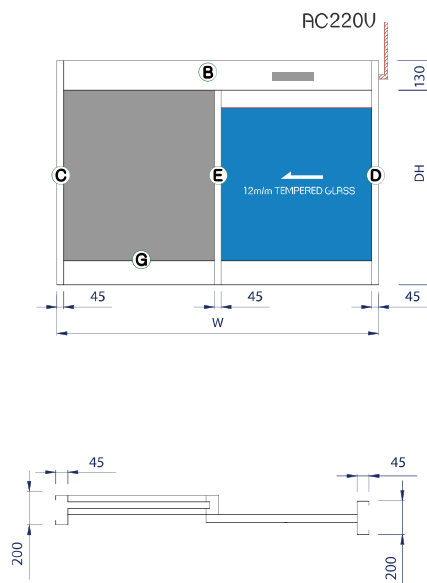
Model	WS-T200(S)	WS-T400(D)
Weight of the door	130kg	120kg × 2
Size	2M	4M
Width of the door	450~3000mm	
Speed of the opening and shutting	200~600mm/sec (Controlled by 10stages)	
Opening maintenance time	0~50sec(Variable)	
Input voltage	AC 220V 50/60Hz	
Controlling type	Digital micro processor control	
Power transmission	90W DC MOTOR timing belt driving	
Operating temp	-20 °C ~ + 55 °C	

Drawing

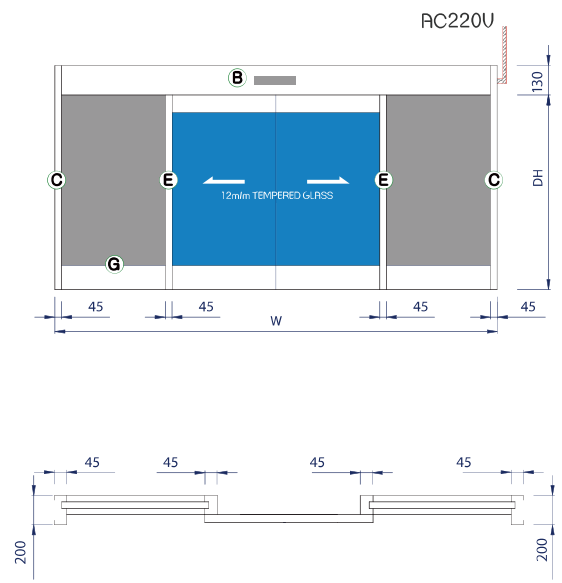
Section



Single



Double



unit : mm