



# Sliding close door

The door can be opened with much less power, and make better use of a space.

This door using special sealed air cylinder can be opened with much less power, and indoor's silence can be kept because there is no noise.

A type : Tensile Spring method is applied to operate weight and double width door. The convenience of installation is increased by unifying operating and braking parts.



B type : Clock work spring is applied as suitable operator for light weight door. The convenience of control is increased by separating operating part with braking part.



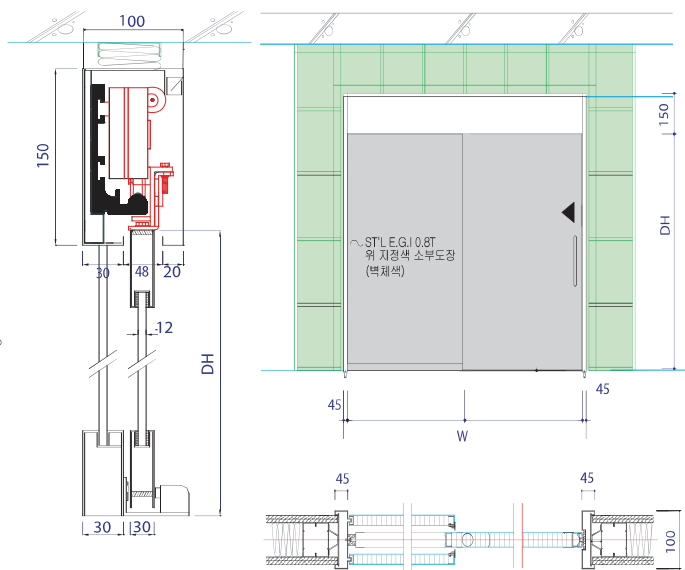
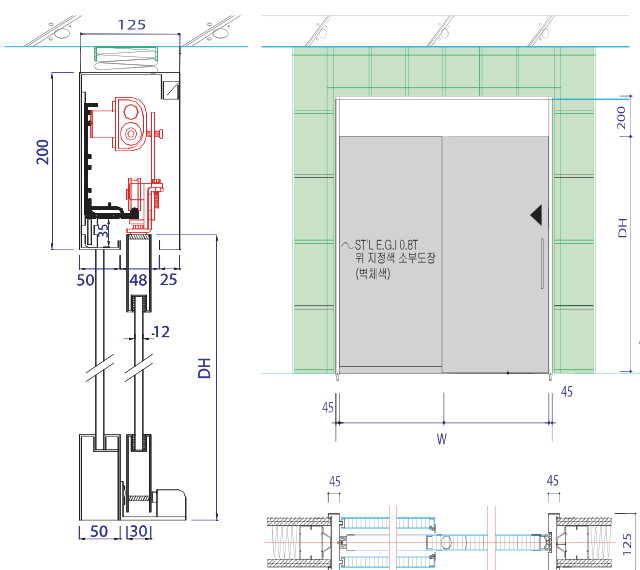
## Drawing

Section(A Type)

Front View

Section(B Type)

Front View



unit : mm